

Catalog Product

Hotel | Restaurant | Cafe | Catering | Villa dll



PT SINAR PROSVEL UNITAMA
Professional Foodservice Equipment

Pantai Indah Barat
Komp. TOHO PIK Blok M No. 20
Kamal Muara - Jakarta Utara 14470
Indonesia

prosvel.fnb

sinarprosvelunitama

Prosvel.f&b

prosvel-fnb

We reserve the right to change specifications appearing in this bulletin without incurring any obligation for equipment previously or subsequently sold. Check www.prosvel.co.id for updates.

UPRIGHT CHILLER 6 DOORS



Specification	
Model	CSUF15B6
Volume	1500 L
Voltage	220-240/50Hz
Temperature	0~ + 10°C
Refrigerant	R134a / Fan Cooling
Display Control	Dixel
Compressor	Embraco
Dimension	1830 x 760 x 1980 mm
Weight	245 kg

UPRIGHT FREEZER 6 DOORS



Specification	
Model	CSUF15A6
Volume	1500 L
Voltage	220-240/50Hz
Temperature	0~ + 22°C
Refrigerant	R134a / Fan Cooling
Display Control	Dixel
Compressor	Embraco
Dimension	1830 x 760 x 1980 mm
Weight	245 kg



SCAN TO ORDER

PT. SINAR PROSVEL UNITAMA
Pantai Indah Barat
Komp. TOHO PIK Blok M No. 20
Kamal Muara - Jakarta Utara 14470
Indonesia



UPRIGHT CHILLER 2 DOORS



Specification	
Model	CSUF5B2
Volume	450 L
Voltage	220-240/50Hz
Temperature	0~ + 10°C
Refrigerant	R134a / Fan Cooling
Display Control	Dixel
Compressor	Embraco
Dimension	620 x 760 x 1980 mm
Weight	108 kg

UPRIGHT FREEZER 2 DOORS



Specification	
Model	CSUF5A2
Volume	450 L
Voltage	220-240/50Hz
Temperature	0~ + 22°C
Refrigerant	R134a / Fan Cooling
Display Control	Dixel
Compressor	Embraco
Dimension	620 x 760 x 1980 mm
Weight	108 kg



SCAN TO ORDER

PT. SINAR PROSVEL UNITAMA
Pantai Indah Barat
Komp. TOHO PIK Blok M No. 20
Kamal Muara - Jakarta Utara 14470
Indonesia



UPRIGHT FREEZER 4 DOORS



Specification	
Model	CSUF10A4
Volume	950 L
Voltage	220-240/50Hz
Temperature	0~ + 10°C
Refrigerant	R134a
Display Control	Dixel
Compressor	Embraco
Dimension	1220 x 760 x 1980 mm
Weight	200 kg

UPRIGHT CHILLER & FREEZER 4 DOORS



Specification	
Model	CSUF10A2B2
Volume	950 L
Voltage	220-240/50Hz
Temperature	0~ + 10°C & 0~ + 22°C
Refrigerant	R134a & R404a
Display Control	Dixel
Compressor	Embraco
Dimension	1220 x 760 x 1980 mm
Weight	180 kg



SCAN TO ORDER

PT. SINAR PROSVEL UNITAMA
Pantai Indah Barat
Komp. TOHO PIK Blok M No. 20
Kamal Muara - Jakarta Utara 14470
Indonesia



UPRIGHT CHILLER 4 DOORS



Specification	
Model	CSUF10B4
Volume	950 L
Voltage	220-240/50Hz
Temperature	0~ + 10°C
Refrigerant	R134a
Display Control	Dixel
Compressor	Embraco
Dimension	1220 x 760 x 1980 mm
Weight	178 kg

UNDERCOUNTER CHILLER 2 DOORS



Specification	
Model	GWF12M2
Volume	228 L
Voltage	220-240/50Hz
Temperature	0~ + 10°C
Refrigerant	R134a / Fan Cooling
Display Control	Digital
Compressor	Embraco
Dimension	1220 x 700 x 850 mm
Weight	95 kg



SCAN TO ORDER

PT. SINAR PROSVEL UNITAMA

Pantai Indah Barat
Komp. TOHO PIK Blok M No. 20
Kamal Muara - Jakarta Utara 14470
Indonesia



UNDERCOUNTER FREEZER 2 DOORS



Specification	
Model	K- GWF12M2
Volume	228 L
Voltage	220-240/50Hz
Temperature	0~ + 10°C
Refrigerant	R134a / Fan Cooling
Display Control	Digital
Compressor	Embraco
Dimension	1220 x 700 x 850 mm
Weight	95 kg

UNDERCOUNTER CHILLER 2 DOORS



Specification	
Model	SWF15M2
Volume	332 L
Voltage	220-240/50Hz
Temperature	0~ + 10°C
Refrigerant	R134a / Fan Cooling
Display Control	Dixel
Compressor	Embraco
Dimension	1500 x 700 x 850 mm
Weight	111 kg



SCAN TO ORDER

PT. SINAR PROSVEL UNITAMA
Pantai Indah Barat
Komp. TOHO PIK Blok M No. 20
Kamal Muara - Jakarta Utara 14470
Indonesia



UNDERCOUNTER FREEZER 2 DOORS



Specification	
Model	K- SWF15M2
Volume	332 L
Voltage	220-240/50Hz
Temperature	0~ + 22°C
Refrigerant	R134a / Fan Cooling
Display Control	Dixel
Compressor	Embraco
Dimension	1500 x 700 x 850 mm
Weight	111 kg

UNDERCOUNTER CHILLER 4 DRAWERS



Specification	
Model	ASWF15D4
Volume	325 L
Voltage	220-240/50Hz
Temperature	0~ + 10°C
Refrigerant	R134a / Fan Cooling
Display Control	Dixel
Compressor	Embraco
Dimension	1504 x 704 x 850 mm
Weight	116 kg



SCAN TO ORDER

PT. SINAR PROSVEL UNITAMA
Pantai Indah Barat
Komp. TOHO PIK Blok M No. 20
Kamal Muara - Jakarta Utara 14470
Indonesia



UNDERCOUNTER CHILLER 3 GLASS DOORS



Specification	
Model	FTWF18M3G-W70
Volume	445 L
Voltage	220-240/50Hz
Temperature	0~ + 10°C
Refrigerant	R134a / Fan Cooling
Display Control	Dixel
Compressor	Embraco
Dimension	1800 x 700 x 850 mm
Weight	121 kg

UNDERCOUNTER CHILLER 2 GLASS DOORS



Specification	
Model	FTWF15M2G-W70
Volume	322 L
Voltage	220-240/50Hz
Temperature	0~ + 10°C
Refrigerant	R134a / Fan Cooling
Display Control	Dixel
Compressor	Embraco
Dimension	1500 x 700 x 850 mm
Weight	113 kg



SCAN TO ORDER

PT. SINAR PROSVEL UNITAMA
Pantai Indah Barat
Komp. TOHO PIK Blok M No. 20
Kamal Muara - Jakarta Utara 14470
Indonesia



UNDERCOUNTER CHILLER 6 DRAWERS



Specification	
Model	ASWF18D6
Volume	420 L
Voltage	220-240/50Hz
Temperature	0~ + 10°C
Refrigerant	R134a / Fan Cooling
Display Control	Digital
Compressor	Embraco
Dimension	1807 x 704 x 850 mm
Weight	121 kg

UNDERCOUNTER CHILLER 3 DOORS



Specification	
Model	SWF18M3
Volume	445 L
Voltage	220-240/50Hz
Temperature	0~ + 10°C
Refrigerant	R134a / Fan Cooling
Display Control	Dixel
Compressor	Embraco
Dimension	1800 x 700 x 850 mm
Weight	111 kg



SCAN TO ORDER

PT. SINAR PROSVEL UNITAMA
Pantai Indah Barat
Komp. TOHO PIK Blok M No. 20
Kamal Muara - Jakarta Utara 14470
Indonesia



UNDERCOUNTER FREEZER 3 DOORS



Specification	
Model	K-SWF18M3
Volume	445 L
Voltage	220-240/50Hz
Temperature	0~ + 22°C
Refrigerant	R134a / Fan Cooling
Display Control	Dixel
Compressor	Embraco
Dimension	1800 x 700 x 850 mm
Weight	111 kg

INSTANT GLASS FROSTER



Specification	
Power	20 w
Gas Consumption	3.5 - 4.5 MPa
Suitable Cup Diameter	≤ 130mm
Dimension	120 x 280 x 530 mm
Requires	Fluid CO2 Cylinders With Dip Tube
Weight	5.2kg



SCAN TO ORDER

PT. SINAR PROSVEL UNITAMA
Pantai Indah Barat
Komp. TOHO PIK Blok M No. 20
Kamal Muara - Jakarta Utara 14470
Indonesia



GAS SALAMANDER



Specification	
Model	GS-14
Burner	4 Burner
Gas Cons	27,533Btu/Hr
Gas Flow	Gas Flow 0,432kg/h
Dimension	620x520x590mm
Weight	26kg

ELECTRIC SALAMANDER



Specification	
Model.	ES-4000L
Sumber Daya	Elektrik
Tipe	salamander
Tegangan	220-240V
deskripsi	salamander elektrik
daya	4000W
fitur	dengan sistem pengangkatan
Spesifikasi	24x18x20 inci, 108 lbs
Kapasitas Produksi	4000pcs/bulan



SCAN TO ORDER

PT. SINAR PROSVEL UNITAMA
 Pantai Indah Barat
 Komp. TOHO PIK Blok M No. 20
 Kamal Muara - Jakarta Utara 14470
 Indonesia



ELECTRIC BREAD TOASTER 4 SLOTS



Specification	
Model	ET-4
Voltage	220-240/50Hz
Power	2250 w
Dimension	370 x 240 x 220 mm
Bread Racks	4 Pieces of bread
Weight	5 kg

ELECTRIC BREAD TOASTER 6 SLOTS



Specification	
Model	ET-6
Voltage	220-240/50Hz
Power	3150 w
Dimension	460 x 240 x 220 mm
Bread Racks	6 Pieces of bread
Weight	5,5 kg



SCAN TO ORDER

PT. SINAR PROSVEL UNITAMA
 Pantai Indah Barat
 Komp. TOHO PIK Blok M No. 20
 Kamal Muara - Jakarta Utara 14470
 Indonesia



ELECTRIC PANINI GRILL



Specification	
Model	VEG-881A
Voltage	220-240/50Hz
Power	1830 w
Dimension	310 x 440 x 270 mm
Grill	Panini Grill
Weight	15 kg

ELECTRIC DOUBLE PANINI GRILL



Specification	
Model	VEG-882A
Voltage	220-240/50Hz
Power	3660 w
Dimension	570 x 440 x 270 mm
Grill	Double Panini Grill
Weight	38 kg



SCAN TO ORDER

PT. SINAR PROSVEL UNITAMA

Pantai Indah Barat
Komp. TOHO PIK Blok M No. 20
Kamal Muara - Jakarta Utara 14470
Indonesia

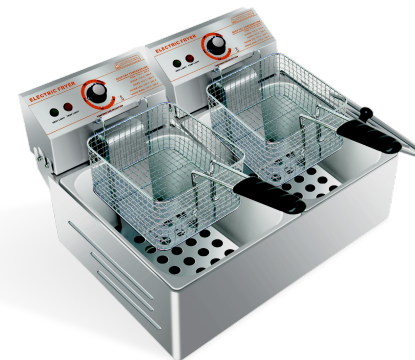


TABLE TOP ELECTRIC DEEP FRYER 5,5 LITER



Specification	
Model	HY-81
Voltage	220-240/50Hz
Power	2500 w
Dimension	300 x 510 x 470 mm
Basket	1 tank 1 basket
Weight	4 kg

TABLE TOP ELECTRIC DEEP FRYER 11 LITER



Specification	
Model	HY-82
Voltage	220-240/50Hz
Power	2500 w
Dimension	580 x 510 x 470 mm
Basket	2 tank 2 basket
Weight	7 kg



SCAN TO ORDER

PT. SINAR PROSVEL UNITAMA

Pantai Indah Barat
Komp. TOHO PIK Blok M No. 20
Kamal Muara - Jakarta Utara 14470
Indonesia

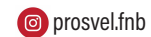


TABLE TOP SINGLE GAS DEEP FRYER



Specification	
Model	HY-71
Gas.Cons	18.000 Btu/Hr
Capacity	5,5 L
Dimension	300 x 510 x 470 mm
Basket	1 tank 1 basket
Weight	5 kg

TABLE TOP DOUBLE GAS DEEP FRYER



Specification	
Model	HY-72
Gas.Cons	18.000 + 18.000 Btu/Hr
Capacity	5,5 L + 5,5 L
Dimension	580 x 510 x 470 mm
Basket	2 tank 2 basket
Weight	7 kg



SCAN TO ORDER

PT. SINAR PROSVEL UNITAMA
 Pantai Indah Barat
 Komp. TOHO PIK Blok M No. 20
 Kamal Muara - Jakarta Utara 14470
 Indonesia



CYLINDER ELECTRIC WATER BOILER



Specification	
Model	WH-32
Voltage	220-240/50Hz
Power	2000 w
Dimension	366 x 638 mm
Capacity	31 L
Weight	7 kg

CYLINDER ELECTRIC WATER BOILER



Specification	
Model	WH-18
Voltage	220-240/50Hz
Power	1500 w
Dimension	366 x 518 mm
Capacity	18 L
Weight	7 kg



SCAN TO ORDER

PT. SINAR PROSVEL UNITAMA
 Pantai Indah Barat
 Komp. TOHO PIK Blok M No. 20
 Kamal Muara - Jakarta Utara 14470
 Indonesia



GAS CHAR BROILER



Specification	
Model	TGH-8
Burner	2 Burner
Gas Cons	58,000 Btu/Hr
Dimention	700 x 680 x 500 mm
Grill	2 Char Rock Broiler
Weight	78 kg

GAS FLAT GRIDDLE



Specification	
Model	TGG-8A
Burner	2 Burner
Gas Cons	55,100 Btu/Hr
Dimention	700 x 680 x 500 mm
Grill	2 Gas Griddle
Weight	64 kg



SCAN TO ORDER

PT. SINAR PROSVEL UNITAMA

Pantai Indah Barat
Komp. TOHO PIK Blok M No. 20
Kamal Muara - Jakarta Utara 14470
Indonesia



GAS 4 BURNER WITH OVEN



Specification	
Model	CR-BO-709
Gas Cons	113,900 Btu/Hr
Dimention	700 x 770 x 950 mm
Grill	2 Gas Burner
Weight	155 kg

GAS NOODLE COOKER



Specification	
Model	TGN-8
Basket	2 Basket
Gas Cons	27,533 Btu/Hr
Dimention	630 x 703 x 500 mm
Grill	2 Gas Griddle
Weight	52 kg



SCAN TO ORDER

PT. SINAR PROSVEL UNITAMA
 Pantai Indah Barat
 Komp. TOHO PIK Blok M No. 20
 Kamal Muara - Jakarta Utara 14470
 Indonesia



GAS 4 BURNER



Specification	
Model	TGC-8
Gas Cons	87,800 Btu/Hr
Dimention	700 x 680 x 500 mm
Grill	4 Gas Burner
Weight	60 kg

FREE STANDING GAS DEEP FRYER



Specification	
Model	CR-FR-708
Basket	2 Basket
Gas Cons	57,900 Btu/Hr
Dimention	370 x 770 x 950 mm
Capacity	36 L
Weight	48 kg



SCAN TO ORDER

PT. SINAR PROSVEL UNITAMA

Pantai Indah Barat
Komp. TOHO PIK Blok M No. 20
Kamal Muara - Jakarta Utara 14470
Indonesia



MEAT SLICER



Specification	
Model	SS-250C
Voltage	220-240/50Hz
Power	120 w
Dimension	460 x 400 x 380 mm
Blade Length	250 mm
Weight	20 kg

MEAT SLICER

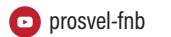


Specification	
Model	SS-300C
Voltage	220-240/50Hz
Power	180 w
Dimension	590 x 490 x 400 mm
Blade Length	30 mm
Weight	25 kg



SCAN TO ORDER

PT. SINAR PROSVEL UNITAMA
 Pantai Indah Barat
 Komp. TOHO PIK Blok M No. 20
 Kamal Muara - Jakarta Utara 14470
 Indonesia



MEAT GRINDER



Specification	
Model	TC-12
Voltage	220-240/50Hz
Power	735 w
Dimension	240 x 210 x 315 mm
Capacity	150 Kg/Hr
Weight	22,2 kg

MEAT GRINDER

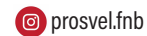


Specification	
Model	TC-22
Voltage	220-240/50Hz
Power	1100 w
Dimension	300 x 250 x 365 mm
Capacity	250 Kg/Hr
Weight	30,2 kg



SCAN TO ORDER

PT. SINAR PROSVEL UNITAMA
 Pantai Indah Barat
 Komp. TOHO PIK Blok M No. 20
 Kamal Muara - Jakarta Utara 14470
 Indonesia



SHOWCASE FOOD WARMER



Specification	
Model	BV-809B
Voltage	220-240/50Hz
Power	1500 w
Dimension	700 x 490 x 660 mm
Weight	31 kg

SHOWCASE FOOD WARMER



Specification	
Model	BV-809
Voltage	220-240/50Hz
Power	1600 w
Dimension	950 x 490 x 600 mm
Weight	44 kg



SCAN TO ORDER

PT. SINAR PROSVEL UNITAMA

Pantai Indah Barat
Komp. TOHO PIK Blok M No. 20
Kamal Muara - Jakarta Utara 14470
Indonesia



WAFFLE BAKER



Specification	
Model	HF-01
Voltage	220-240/50Hz
Power	1200 w
Dimension	250 x 430 x 250 mm
Weight	8 kg

PRE RINSE HOT & COLD



Specification	
Model	Pre Rinse Deck Mounted
Material	Brass with chrome finished
Water inlet/ Outlet	1/2 Inch



SCAN TO ORDER

PT. SINAR PROSVEL UNITAMA

Pantai Indah Barat
Komp. TOHO PIK Blok M No. 20
Kamal Muara - Jakarta Utara 14470
Indonesia



HIGH SPOUT PULL OUT FAUCET HOT & COLD



Specification	
Model	Pull Out Faucet Hot & Cold
Material	Brass with chrome finished
Water inlet	1/2 Inch
Type	Deck Mounted
Dimension	235 x 53 x 170 mm

COLD FAUCET HIGH



Specification	
Model	Cold deck mounted - high
Material	Brass with chrome finished
Water inlet	1/2 Inch
Dimension	160 x 38 x 250 mm



SCAN TO ORDER

PT. SINAR PROSVEL UNITAMA
 Pantai Indah Barat
 Komp. TOHO PIK Blok M No. 20
 Kamal Muara - Jakarta Utara 14470
 Indonesia



COLD FAUCET LOW



Specification	
Model	Cold deck mounted - low
Material	Brass with chrome finished
Water inlet	1/2 Inch
Dimension	210 x 38 x 180 mm

HOT & COLD FAUCET



Specification	
Model	LB - 001
Material	Brass with chrome finished
Water inlet	1/2 Inch
Type	Hot & Cold deck mounted
Dimension	210 x 38 x 180 mm



SCAN TO ORDER

PT. SINAR PROSVEL UNITAMA
 Pantai Indah Barat
 Komp. TOHO PIK Blok M No. 20
 Kamal Muara - Jakarta Utara 14470
 Indonesia



AVUR STAINLESS STEEL



Specification	
Ukuran Drat	1 1/2 Inch
Material	Stainless Steel #304
Diameter	11 Cm
Tinggi	9 Cm

FLEXIBLE HOSE STAINLESS STEEL 50CM



Specification	
Model	Flexible Hose
Material	SS 304 + Brass
Water inlet/ Outlet	1/2 Inch
Lenght	50 Cm
Seal	Rubber
Max Pressure	5 Kg/ cm2
Working Pressure	1/2 - 4 Kg/ Cm2
Max. Temperature	70C



SCAN TO ORDER

PT. SINAR PROSVEL UNITAMA
 Pantai Indah Barat
 Komp. TOHO PIK Blok M No. 20
 Kamal Muara - Jakarta Utara 14470
 Indonesia



UNDERCOUNTER DISHWASHER



Specification	
Model	U50
Volume	15,3 L
Voltage	380V - 415V/50Hz
Temperature	62°C
Circulating Pump	0,5kW
Power	7,8kW
Dimension	720 x 712 x 1020 mm
Weight	76 kg

HOOD TYPE DISHWASHER



Specification	
Model	P50
Volume	28 L
Voltage	380V - 415V/50Hz
Temperature	62°C
Circulating Pump	0,6kW
Power	11,8kW
Dimension	720 x 712 x 1020 mm
Weight	123 kg



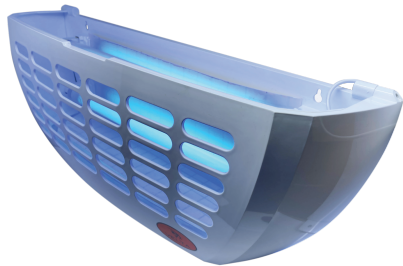
SCAN TO ORDER

PT. SINAR PROSVEL UNITAMA

Pantai Indah Barat
Komp. TOHO PIK Blok M No. 20
Kamal Muara - Jakarta Utara 14470
Indonesia



INSECT CATCHER GLUE TRAP



Specification	
Model	TLKF - 01
Voltage	380V - 415V/50Hz
Power	30/50 W
Dimension	600 x 150 x 260 mm
Weight	2,16 kg

INSECT CATCHER GLUE TRAP PORTABLE



Specification	
Model	GB-4600
Area Covered (m ²)	30 - 50
Voltage (V/Hz)	18 W / 220-240/50
Dimension	270 x 180 x 430 mm
Weight	2,15 kg



SCAN TO ORDER

PT. SINAR PROSVEL UNITAMA
 Pantai Indah Barat
 Komp. TOHO PIK Blok M No. 20
 Kamal Muara - Jakarta Utara 14470
 Indonesia



CHEST FREEZER



Specification	
Type	AB-318-R
Dimensi (p x l x t) (cm)	111.4 x 61.6 x 84.7
Volume (l)	318
Watt (220V/1P)	140
Capacity (Frozen/24h)	20
Storage Capacity (kg)	190
Nett Weight (kg)	38
Gross Weight (kg)	41
Refr.	R600a
Castor	4
Temp. (°C)	15~26

CHEST FREEZER



Specification	
Type	AB-506-R
Dimensi (p x l x t) (cm)	144 x 67.5 x 85.2
Volume (l)	420
Watt (220V/1P)	165
Capacity (Frozen/24h)	26
Storage Capacity (kg)	280
Nett Weight (kg)	58
Gross Weight (kg)	64
Refr.	R600a
Castor	4
Temp. (°C)	15~26



SCAN TO ORDER

PT. SINAR PROSVEL UNITAMA
Pantai Indah Barat
Komp. TOHO PIK Blok M No. 20
Kamal Muara - Jakarta Utara 14470
Indonesia



CHEST FREEZER



Specification	
Type	AB-600-R
Dimensi (p x l x t) (cm)	164.6 x 68.1 x 84.7
Volume (l)	500
Watt (220V/1P)	230
Capacity (Frozen/24h)	40
Storage Capacity (kg)	300
Nett Weight (kg)	62
Gross Weight (kg)	68
Refr.	R600a
Castor	4
Temp. (°C)	15~26

CHEST FREEZER



Specification	
Type	AB-208-R
Dimensi (p x l x t) (cm)	80.2 x 55.9 x 85.4
Volume (l)	210
Watt (220V/1P)	125
Capacity (Frozen/24h)	12
Storage Capacity (kg)	105
Nett Weight (kg)	35
Gross Weight (kg)	37
Refr.	R600a
Castor	4
Temp. (°C)	15~26



PT. SINAR PROSVEL UNITAMA
Pantai Indah Barat
Komp. TOHO PIK Blok M No. 20
Kamal Muara - Jakarta Utara 14470
Indonesia

SCAN TO ORDER



DISPLAY COOLER 1 DOOR



Specification	
Type	EXPO-90FD
Dimensi (p x l x t) (cm)	44.5 x 51 x 83.1
Volume (l)	92
Watt (220V/1P)	95
Nett Weight (kg)	32
Gross Weight (kg)	33
Refr.	R600a
Temp. (°C)	(+2)~(+8)

DISPLAY COOLER 1 DOOR



Specification	
Type	EXPO-26FC
Dimensi (p x l x t) (cm)	54 x 57.5 x 144
Volume (l)	192
Watt (220V/1P)	180
Nett Weight (kg)	53
Gross Weight (kg)	58
Refr.	R600a
Temp. (°C)	(+2)~(+8)



PT. SINAR PROSVEL UNITAMA
Pantai Indah Barat
Komp. TOHO PIK Blok M No. 20
Kamal Muara - Jakarta Utara 14470
Indonesia

SCAN TO ORDER



DISPLAY COOLER 2 DOORS



Specification	
Type	EXPO-1050AH/CN
Dimensi (p x l x t) (cm)	121 x 68 x 218
Volume (l)	1.050
Watt (220V/1P)	630
Nett Weight (kg)	157
Gross Weight (kg)	160
R134a	R134a
Temp. (°C)	(+4)~(+8)

DISPLAY COOLER 3 DOORS



Specification	
Type	EXPO-1500AH/CN
Dimensi (p x l x t) (cm)	170.2 x 68 x 218
Volume (l)	1.500
Watt (220V/1P)	960
Nett Weight (kg)	207
Gross Weight (kg)	210
Refr.	R134a
Temp. (°C)	(+4)~(+8)



SCAN TO ORDER

PT. SINAR PROSVEL UNITAMA
Pantai Indah Barat
Komp. TOHO PIK Blok M No. 20
Kamal Muara - Jakarta Utara 14470
Indonesia

